



FL-10 LED

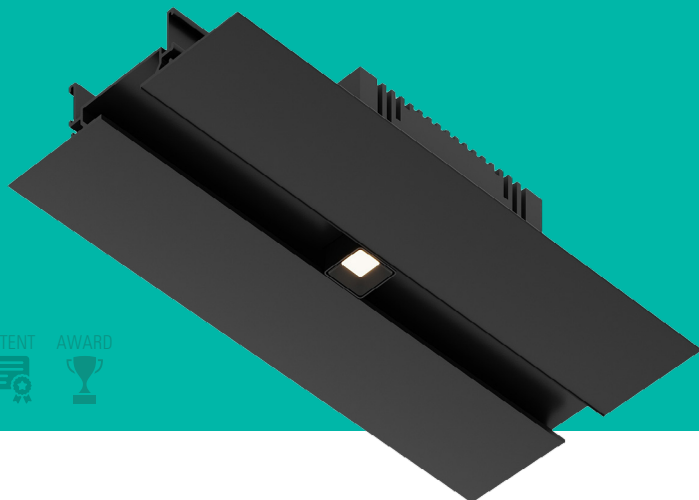
New architectural linear diffuser system
with integrated LED lighting

The FL-10 LED FlowBar system maximizes air diffuser performance while giving architects and designers greater aesthetic freedom than conventional air supply diffusers. Integrating HVAC and lighting can also reduce costs and installation time.



The FlowBar system maximizes HVAC performance while maintaining aesthetic options for designers when paired with the Minus lighting module from Apure® Architectural Lighting.

DESCRIPTION



Apure's groundbreaking Minus Lighting Module designed exclusively for seamless integration with the Titus FL-10 Architectural Linear Diffuser. Upgrade your space with this cutting-edge LED Module and experience a harmonious blend of style and functionality as this innovative product takes architectural lighting to new heights, effortlessly merging the patented and award-winning functionality of the Minus Lighting Series with the elegance and performance of Flowbar.



FEATURE

With a low-profile, one-inch slot width, the aluminium FlowBar system features a frameless border for a clean look. It has integral pattern controllers on standard 24-inch centers, which allow the airstream to be directed left and right for horizontal and vertical airflow. The FlowBar system is available in 6-, 8-, 10- and 12-foot segments, along with HighThrow and JetThrow versions. Mitered corners and angle cut ends are also available.



CONSTRUCTION

- Extruded aluminum profile
- 1" slot width for low profile appearance
- Frameless border for clean, aesthetically pleasing ceilings

To learn more about the FL-10 LED architectural linear diffuser system, visit <https://www.titus-hvac.com/Products/Diffusers/FL-LED>.

For more information about Titus, visit www.titus-hvac.com.

SPECIFICATIONS

- Single slot, large capacity linear diffuser offers the designer an alternative to other multi-slot linear diffusers
- Supports and fully integrates with Apure MINUS TWO lighting module
- Reduces costs and installation with lighting and HVAC integrated
- Manufactured entirely from heavy wall extruded aluminum
- Available in 6-foot or 12-foot segments x Standard accessories ensure straight and true installations x All models available in HighThrow and JetThrow versions

FLOWBAR

Titus FlowBar architectural linear diffuser system maximizes engineering performance without sacrificing aesthetic considerations for the designer. FlowBar's outstanding performance allows higher airflows than conventional linear diffusers. The wide array of slot widths allow for more CFM per linear foot while minimizing noise and pressure loss. The Flowbar system is available in continuous linear, incremental linear and square configurations.



Gallery



RESOURCES

Scan QR Code or visit at apurelighting.com/resources/



Resources



Titus FL-10



605 Shiloh Rd. Plano,
Texas 75074

(ofc): 972.212.4800

(web): www.titus-hvac.com